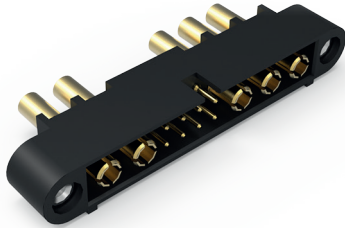


## HIGH PERFORMANCE CONNECTORS

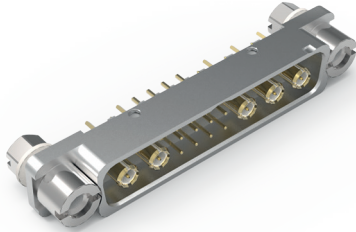
CMM and DMM Series are 2mm pitch connectors designed for harsh environments. Highly modular, they offer millions of configurations, combining signal, high power and high frequency contacts.

[View the datasheet](#) or [Visit each product page](#) for more information.



### CMM Series

MIL 55302  
PPS insulator  
1 week lead time  
MOQ: 1  
—  
BOARD ~ BOARD  
BOARD ~ WIRE  
WIRE ~ WIRE  
—



### DMM Series

MIL 83513  
Aluminium shell,  
EMI protection  
6 weeks lead time  
MOQ: 1  
—  
PANEL MOUNT  
BOARD ~ BOARD  
BOARD ~ WIRE  
WIRE ~ WIRE  
—

## MARKET APPLICATIONS



DEFENSE &  
SECURITY



CIVIL  
AVIONICS



SPACE



ENERGY

**Did you enjoy** the experience?

WE ARE WORKING FOR THE WORLD OF TOMORROW

FOLLOW US



## CREATIVE INTERCONNECT SOLUTIONS



# TORQUE CONTROL SCREWDRIVER

## CMM & DMM SERIES

QUALITY AND PRECISION  
FROM DESIGN TO INSTALLATION

→ [NICOMATIC.COM](http://NICOMATIC.COM)

**HIGH  
QUALITY**

*PREMIUM TOOLS  
FOR ALL YOUR PROJECTS*

## EASY TO USE

—  
*Ergonomic design  
Specific & interchangeable tips  
Pre-set torque control  
Colour coded to easily identify the correct tool  
Contrast footprint packaging to highlight missing parts  
Choose the right tool on online configurator*  
—

## HIGH QUALITY

—  
High performance materials for long term use  
Ensures secure connector installation  
—

**ISO 6789**  
*REQUIREMENTS  
ACCURACY (+/-6%)*

**PART  
NUMBERING**

✓ **QUICK  
ASSEMBLY**

## CMM SERIES

→ | TORQUE 0.2Nm and 0.4Nm

Reference	Description	Overview
<b>C18598</b>	Two screwdrivers and 4 bolt tips packaged in box	
<b>18034</b>	Preset screwdriver 0.2 Nm (Yellow)	
<b>18036</b>	Preset screwdriver 0.4 Nm (Red)	
<b>18040</b>	Internal hex 2 tip	
<b>18041</b>	Slot head tip with clearance	
<b>18127</b>	Internal hex 1.5 tip	
<b>18043</b>	Specific socket tip	

## DMM SERIES

→ | TORQUE 0.3Nm and 0.4Nm

Reference	Description	Overview
<b>C18599</b>	Two screwdrivers and 3 bolt tips packaged in box	
<b>18035</b>	Preset screwdriver 0.3 Nm (Blue)	
<b>18036</b>	Preset screwdriver 0.4 Nm (Red)	
<b>18040</b>	Internal hex 2 tip	
<b>18091</b>	Slot head tip	
<b>18042</b>	Slot head tip with clearance	